

INNOVATIONS IN ACCESSIBILITY

S B SERIES

Introducing the Vapor Ricon 6-Way Power Transfer Seat Base™



Image courtesy of Lewis Reed Group

The Vapor Ricon 6-Way Power Seat Base™ provides safe, convenient and time-saving transfers from wheelchair to a driver or passenger seat.

Operation is simple. With individual fingertip controls, it really couldn't be easier to put yourself in the best driver or passenger position. The seat base is able to swivel 90 degrees for front to rear travel: right, left, forward, backward; and adjust in height: up and down. And, of course, the Vapor Ricon badge is your assurance of a high quality engineered product and a dependable service.

Enables easy and quick transfer from wheelchair to driver or passenger seat.



Key Features

- Fingertip control
- Fits most full-size vans
- Adaptable to suit most seats
- Adjustable to rotate left or right
- 1-Year limited warranty
- Completely automatic rotation
- Full spares package available



Faiveley Vapor Ricon Europe

A **Wabtec** Company

Advanced Vapor Ricon technology features reliable performance and user-friendly design

The Vapor Ricon R1209 6-Way® Power Seat Base facilitates the transfer from a wheelchair to an interior vehicle seat, and vice versa.

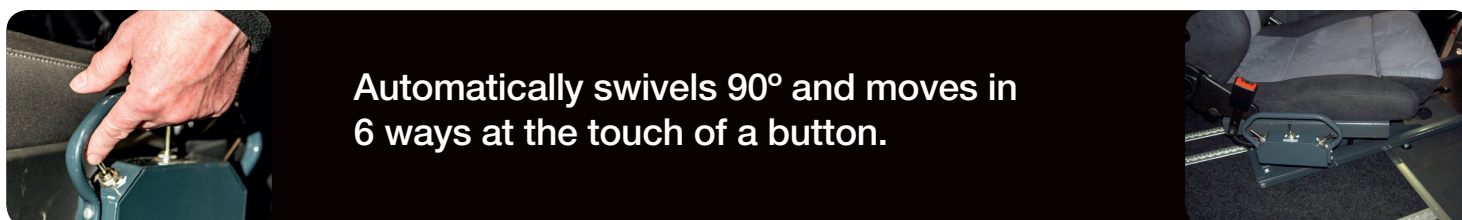
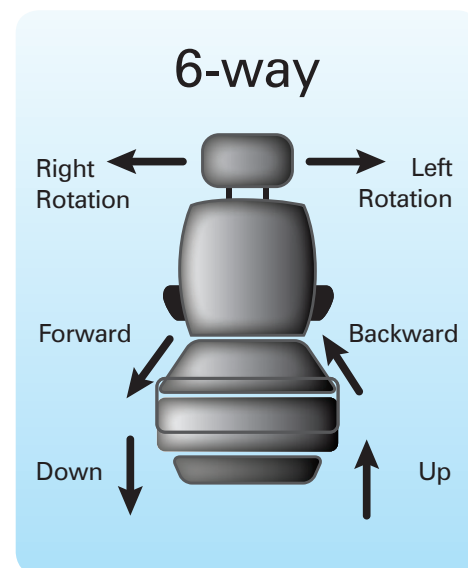
The original seat installs onto the seat base. It uses a scissors-arm lifting mechanism with a 136kg lift capacity.

It can be installed below either the driver or passenger seats, and

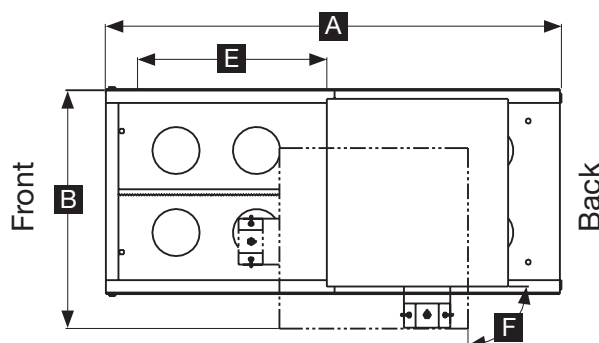
is designed to provide adequate clearance to the airbag (SRS) control module, if present (located on the floor beneath the seats).

Three fingertip control switches are used to control the movement of the seat in 6 ways.

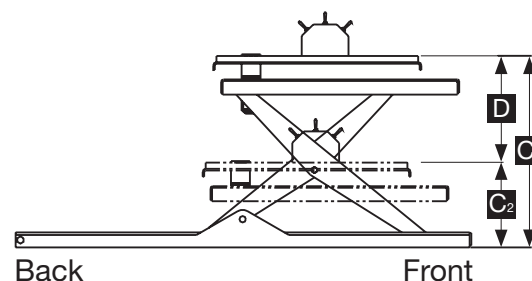
Once the Power Seat Base is installed, it is important that it be properly maintained by following the Vapor Ricon's recommended cleaning, lubrication, and inspection instructions.



Dimensions (mm)



When ordering, please request driver or passenger side



Power		Electro-Mechanical	
Motor Rating - Vertical		12 Volt DC, 16 Amp avg./cycle	
Motor Rating - Horizontal		12 Volt DC, 9 Amp avg./cycle	
Motor Rating - Swivel		12 Volt DC, 5 Amp avg./cycle	

Model	Safe Working Load (Kg)	A Length	B Width	C1 Height, Highest Position	C2 Height, Lowest Position	D Vertical Travel	E Forward/Reverse Travel	F Swivel	Seat Base Weight (Kg)
R1209	136	920	420	385	180	209	340	172° (90° clockwise, 82° anti-clockwise)	43
R1209E	136	1220	420	385	180	209	640		45



FAIVELEY VAPOR RICON EUROPE LIMITED,
Falcon Works, Meadow Lane, Loughborough, LE11 1HS, UK
Tel: + 44 (0) 1509 635 920 Fax: + 44 (0) 1509 261 939
E-mail: sales@vaporricon.co.uk Web: www.vaporricon.co.uk

Copyright 2018 Ricon Corporation. Ricon, Clearway and Sto-Loc are trademarks and S-Series is a registered trademark of Ricon Corporation. All Rights Reserved. This publication contains information accurate at the time of printing. Although descriptions are believed to be correct, complete accuracy cannot be guaranteed. Ricon UK reserves the right to make changes from time to time, without notice or obligation, in prices, specifications, colours and materials, and to change or discontinue models. See your dealer or Ricon UK representative for complete details.

